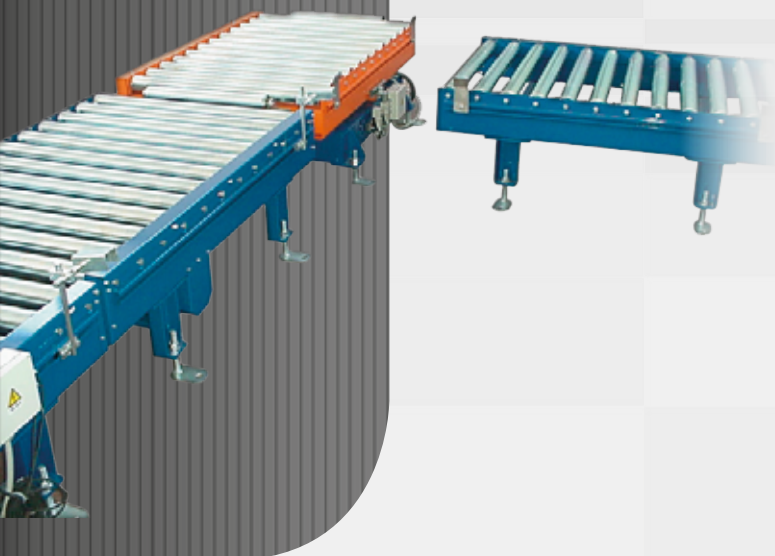


PALLET HANDLING SYSTEMS

CMC Impianti can provide various solutions for the handling of different types and sizes of pallet, both full and empty. The reliability, the robustness and the ease of maintenance are the basis of all proposed solutions.



MOTORISED ROLLER CONVEYORS

The roller conveyors for pallet are made of rigid metalwork fabrication, either in painted steel or stainless steel. According to the load type, the transmission can take place via tangential chain or chain rings.

The diameter, the length and the pitch of the rollers are established according to the load type.

CHAIN CONVEYORS

The chain conveyors for pallet are made of rigid metalwork fabrication, either in painted steel or stainless steel.

The catenaries are available in both 2-chains or the 3-chains versions, depending on the load type to convey and they are used to convey simple or double knits chains.

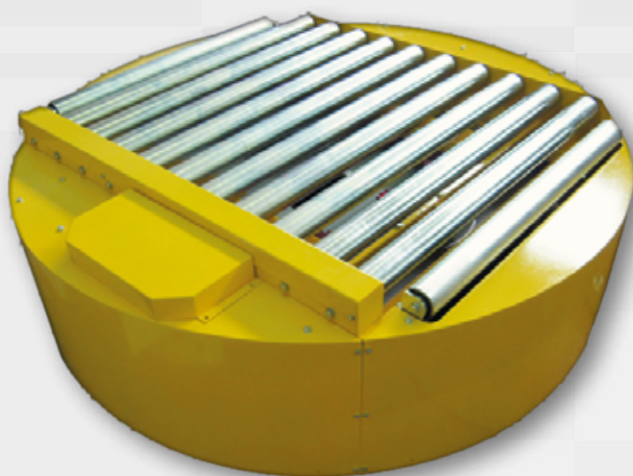


90-DEGREE TRANSLATORS

The CMC Impianti 90-degree translators combine the qualities of powered rollers conveyors and catenaries for pallet.

These devices, which can be implemented by means of pneumatic or electromechanical systems allow the translation at 90° of pallets.

PALLET HANDLING SYSTEMS



ROTARY TABLE CONVEYORS

These devices are a combination of a roller or chain conveyor and a rotation system which allows the horizontal rotation of the pallet, both full and empty; they are made of rigid metalwork fabrication, either in painted steel or stainless steel.

The rotation, which uses a suitably dimensioned slewing, is realized via a gearmotor; a safe use of the device is granted by suitable protections.

PALLET STORAGE DEVICES

The CMC Impianti pallet storage devices can store and unstack empty pallets that will be used in subservience to the palletizing lines. These devices are available in standard painted steel or stainless steel versions.

Under the storage device there is a roller conveyor or a catenary in order to enslave the device. The combination of a raising-lowering movement and the use of pneumatic forks allows storage or de-stacking of empty pallets.



PALLET ELEVATORS & LOWERATORS

The CMC Impianti elevators and lowerators for pallet are machines designed to raise and lower empty and full pallets.

Their rigid metalwork fabrication allows some gaps of different meters between the input and output heights even in case of heavy loads. Their structure can be made of standard painted steel or stainless steel.

The operating principle provides the raising and lowering of a roller or chain conveyor that moves, by means of chains, inside a solid steel structure.



C.M.C. IMPIANTI srl

Via Zocchese, 149/B - 41052 Roccamatina di Guiglia (MO) ITALY

Tel. +39.059.795013 - Fax +39.059.795561 - info@cmcimpianti.it - www.cmcimpianti.it